

MONTHLY MEMBERSHIP PROGRESS REPORT

LOCATION REP OF SRI LANKA

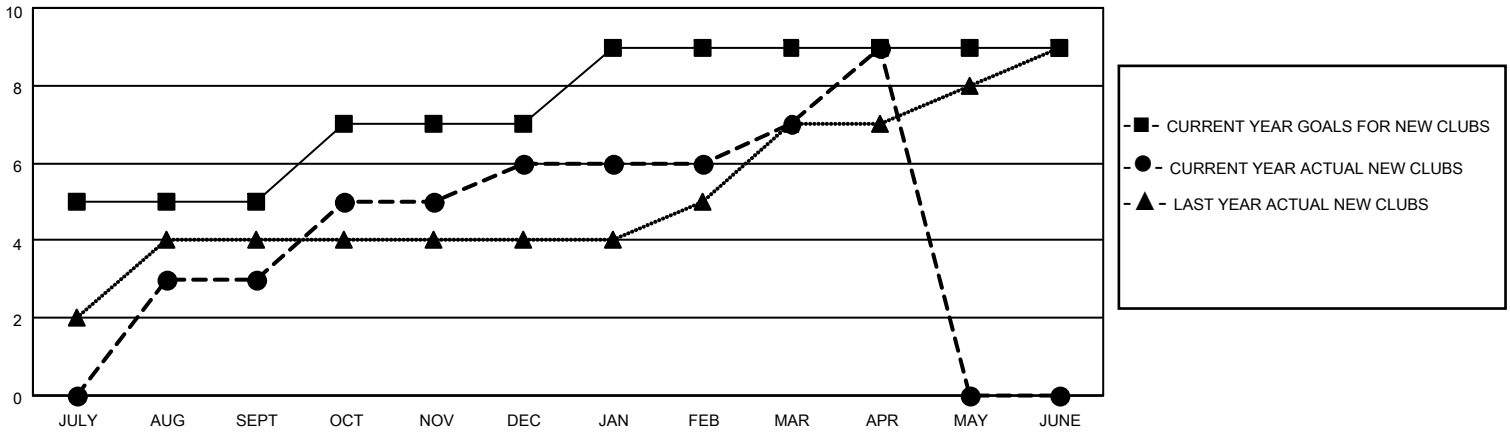
District 306 B1

Results as of: 4/30/2023

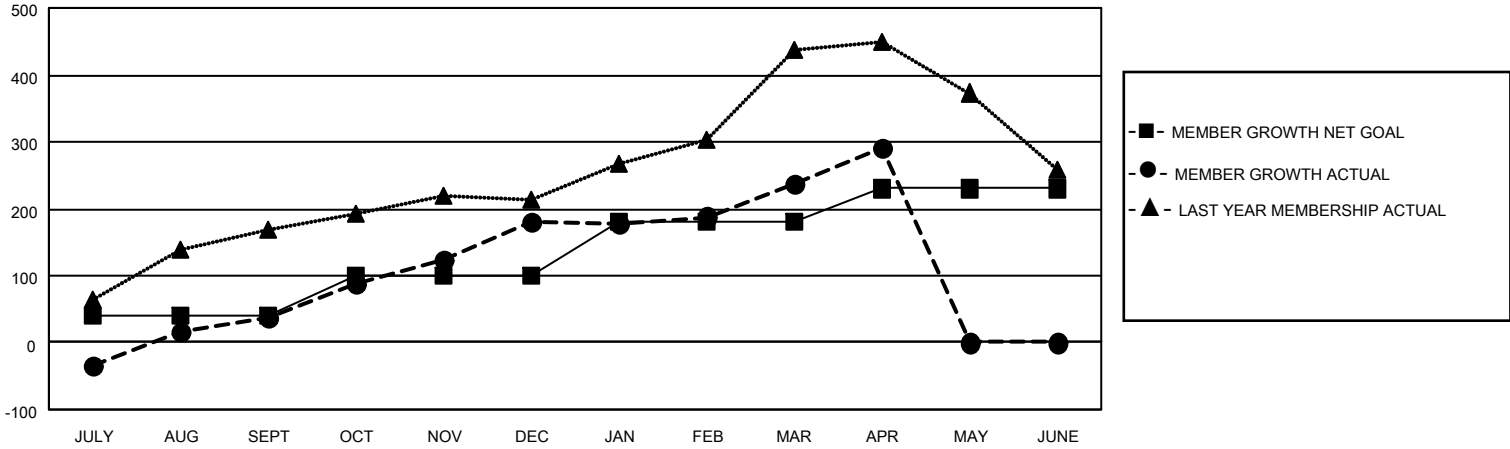
Clubs			
RESULTS FOR 2022-2023			
QUARTER	NEW CLUB GOAL	NEW CLUBS	DROPPED CLUBS
JULY/AUG/SEPT	5	3	0
OCT/NOV/DEC	2	3	0
JAN/FEB/MAR	2	1	0
APR/MAY/JUNE	0	2	0

Members			
RESULTS FOR 2022-2023			
QUARTER	MEMBER GROWTH NET GOAL	MEMBER GROWTH ACTUAL	DROPPED MEMBERS ACTUAL (including transfers)
JULY/AUG/SEPT	40	144	90
OCT/NOV/DEC	60	201	55
JAN/FEB/MAR	80	99	37
APR/MAY/JUNE	50	78	13

GOALS AND ACTUAL NEW CLUBS CUMULATIVE



GOALS AND ACTUAL MEMBERS CUMULATIVE



DROPPED CLUBS: 0

68 CLUBS OF 104 ADDED 1 OR MORE NEW MEMBERS

GENDER DISTRIBUTION

MALE	2,320 (74.86%)
FEMALE	779 (25.14%)
NON BINARY	0 (0.00%)
PREFER NOT TO ANSWER	0 (0.00%)

DROPPED MEMBERS

[CLICK HERE FOR CUMULATIVE MEMBERSHIP DATA](#)

DECEASED	20
CLUB CANCELLED	0
OTHER	175
TOTAL	195

TOTAL FAMILY UNIT MEMBERS 1,028

FAMILY MEMBERS PAYING HALF DUES 562